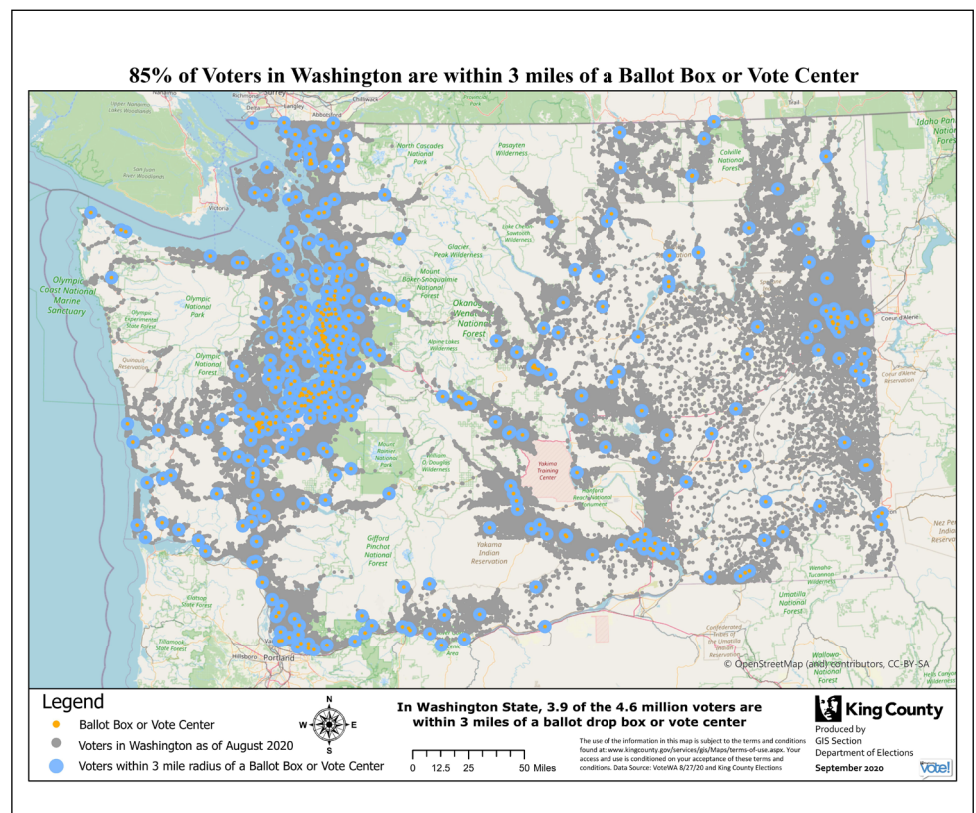


Washington Ballot Drop Box Facts

- We have 560 drop-off locations statewide
- 85% of Washington voters live within 3 miles of a drop-off location.
- In more dense areas it's an even higher percentage, for example in the City of Seattle, nearly 75% of voters live within a mile of a drop box; in Tacoma nearly 70% of voters live within a mile of a location.
- Since passing 5472, the state has added a total of 150 ballot drop boxes which has significantly improved access for voters.
- Statewide there is one ballot drop-off location for every 8,800 registered voters.

Variations Across Counties

- It's also important to remember that every community is different and that all counties saw incredible turnout for the August 4 Primary Election – over 54% statewide.
- In some counties fewer than 20% of voters used a ballot drop box and in others nearly 70% of voters used one.
- There is no correlation between what percentage of voters use a drop box and the number of drop boxes per capita in a county.
- At the end of the day, counties are doing what works for their voters and voters are finding and utilizing these drop-off locations.
- We've spent a decade building our vote-by-mail infrastructure, it works well and will continue to do so in November.



Siting and Operating Drop Boxes

- There's a lot that goes into siting additional drop boxes and it is not a process that can be completed in a rush.
 - o First and foremost, we must ensure that we can safely and securely operate each drop box location.
 - o Additionally, we have to ensure that we can get additional secure boxes from our vendor.
 - o New locations often require permits, right of way access, the pouring of concrete pads, and agreements with property owners – all of which take time.
- In order to maintain trust, it's also critical that a drop boxes have a robust operational plan. Ballots need to be picked-up regularly in a team of two election staff. And there must be staff on-site to close every box promptly at 8:00pm on Election Night.